

How a typeface is made

The craft behind the
transformation of our library

a
dalton
maag
a

What We Do

- Font Library
- Font Modifications
- Logo Refinements
- Custom Typefaces
- Multiscript Typefaces
- Logo to Typeface
- Typeface Consulting

What We Do

- Font Library
- Font Modifications
- Logo Refinements
- Custom Typefaces
- Multiscript Typefaces
- Logo to Typeface
- Typeface Consulting

Showing 52/52 font families

[New](#)[All](#)[Sans Serif](#)[Serif](#)[Script](#)[Display](#)[Select language ^](#)[Select family >](#)

Dalton Maag's Font Library

Our high-quality font library offers designs across sans serif, serif, script, and display fonts, supporting a range of writing systems. Explore weights and styles in our TypeTester at the top of the page and download a free trial of any typeface to test its suitability to your needs. Our user-friendly [licences](#) are straightforward and cost-effective, starting at just \$30.

Need assistance finding the best solution for your budget and technical requirements? Just [get in touch](#) with our team.

54 styles

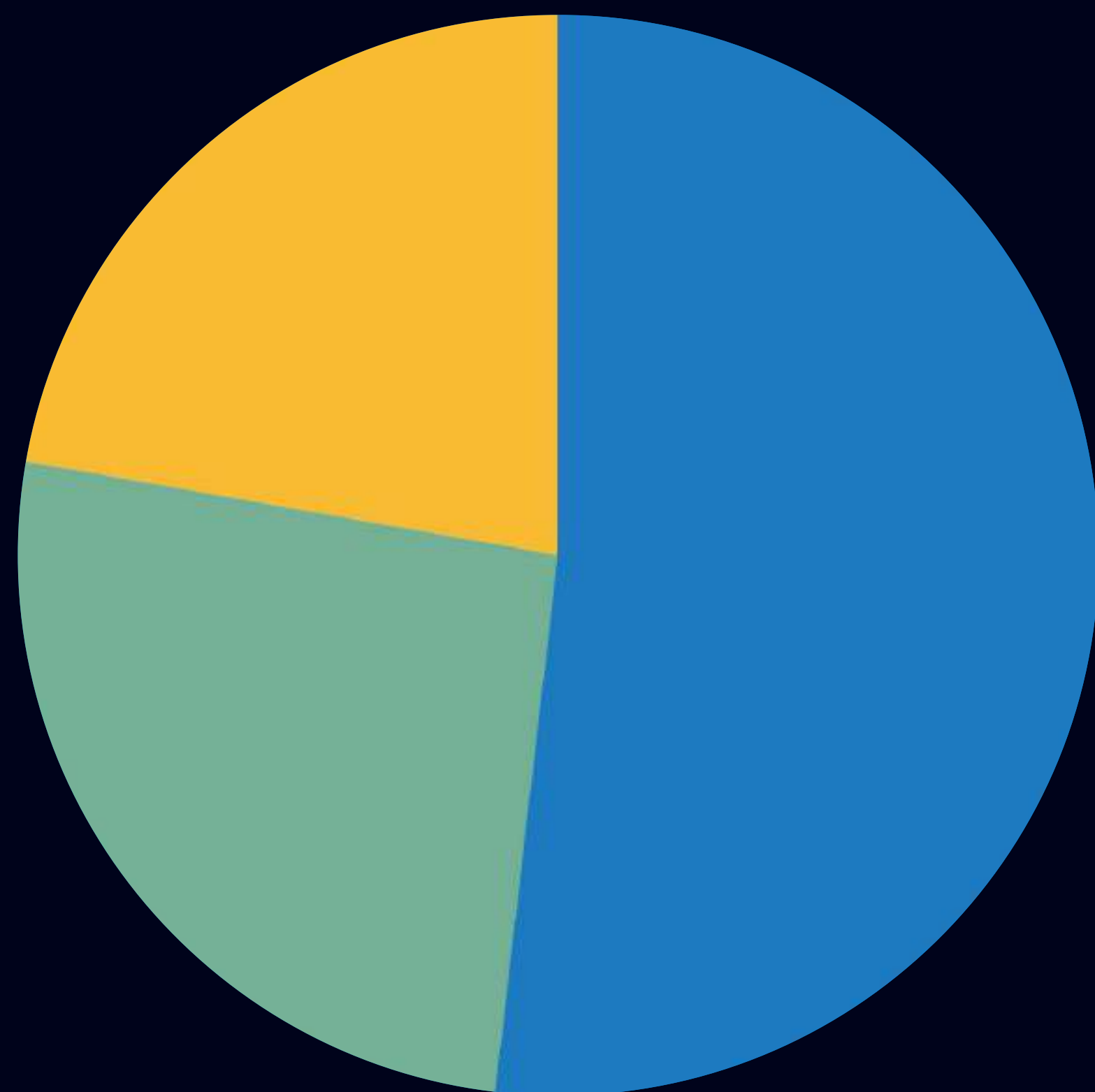
 [Download trial](#)

 [Buy licences](#)

 [Read case study](#)

< **Aktiv Grotesk** >

Dalton Maag Font Library (2018)



27 Families

52% Sans Serif

26% Serif

22% Display

How a typeface is made: Our custom font expertise

Unify Serif is a modern
Serif Regular
reading on-screen. It comes
Serif Regular Italic
regular to bold. It has
Serif Semibold
such as open terminals
Serif Bold Italic
at small sizes.
Sans Regular
Unify Sans is a friendly
comfortable proportion
Sans Condensed Bold
carries the USA TODAY

From Pygmalion in Athens

CT EVERY PERSON
اس أحراراً م
INAI ENA ΣΥΝΟΛ
에 즐거운 을
คงนั้น เข้า ก
НЫЙ ШРИФТ

VIGORATIIN
RETUNVENA
FRESH HA
WDEFACE!



April 2020: Three briefs

April 2020: Three briefs

- Typeface Family to Express Luxury
- Typeface Family for a Fictional Company or Organization
- Typeface Family for an Esports Team

April 2020: Three briefs

- Typeface Family to Express Luxury
- Typeface Family for a Fictional Company or Organization
- Typeface Family for an Esports Team

How a typeface is made: Designers' responses



Carlos De Toro 🤔 16:41

Here you have some sexy curves for welcoming the weekend!



Natalia Qadreh 09:56

hiiii (slightly delayed sharing), good morning ☀️



Samir Souza Reis 13:25

Hi everybody! Here's my contribution.



Zeynep Akay 🏠 16:27

Ball rolling is strictly forbidden in The Republic of Gilead.



Robert Pratley 😊 16:19

Let's start the ball rolling



Rafael Saraiva 🌐 16:23

Let's keep the ball rolling

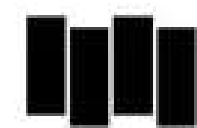
Eleni Beveratou 10:45

is submission round is very nice and



Maria Fontenelle 🍪 13:43

Hi guys! Since I couldn't decide on one idea, I submitted two. Here they are!



Pablo Bosch 08:50

Hey, another one arriving very late to the party. Here's my proposal for Sirius Cybernet



Bianca Berning 09:21

(I love library submission day!)



Pablo Gámez 🌐 16:39

Here you have some candy! 🍫 :goldtp: 🍫

How a typeface is made: Designers' responses

12

Draft Proposals

10

Genres

4

Commissioned Designs

How a typeface is made: Designers' responses

28

Draft Proposals

14

Genres

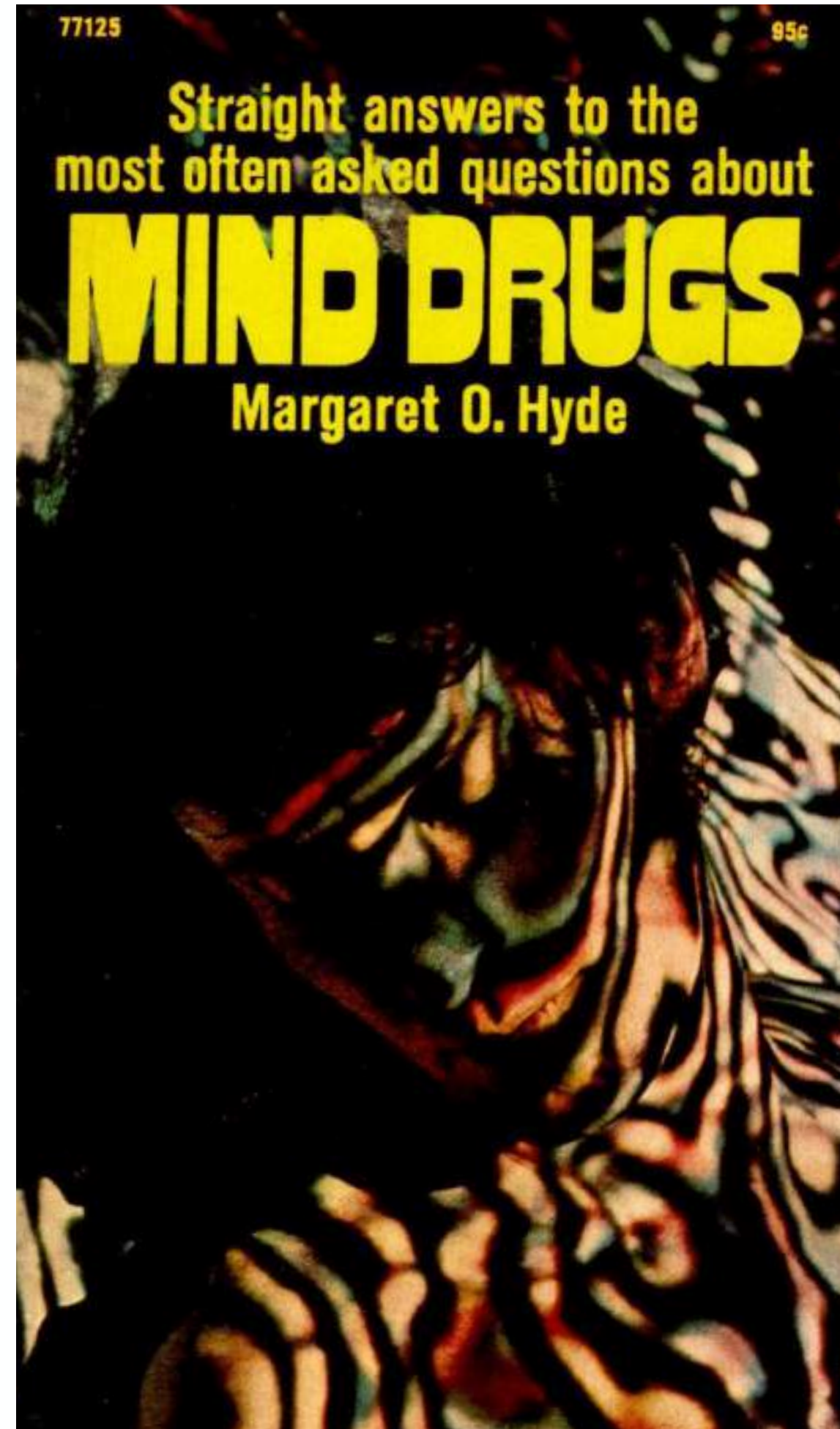
6

Commissioned Designs

How a typeface is made: Our Process



How a typeface is made: Designers' responses



An epic fantasy
of peace and magic.
WIZARDS



How a typeface is made: Designers' responses

æhinopt K GE → or B, P, R, FL, K, S, J
G or Y, V, W, X

Ziggy S

g

ZGRE

anie

anie

- Lab from S. Turing
- ET
- Total Recall
- Dharma Initiative
- Genco - Corleone
- * 1984 (Brave New)

- Styles
- Brutalist Arch.
 - * Clockwork Dr.

- Matrix
- Peaky Blinders
- Parks & Rec
- Oceanic Airlines
- Sig Kahuna Burg Pulp Fiction
- Acme - Road Run + Roger Rabbit (30s, 40s + 40s)

aen

aen

aen

Devanagari
Arabic
Hebrew

v. metrics
st. width 90
x-height 500
cap - h 700
ascender 700

- 1 n
- 2 n
- 3 n
- 4 n
- 5 n

æhinopt KGE

↑ compare n's of refs

Lt

Rg

Bd

e ↔ e

e

e

e

editorial

text

↑ "platforms on" more expressive disjoint, branding

a

a

a

a

↑ more like a platform shoe?

a

a

Lt

EGOYZaehinoprvtv

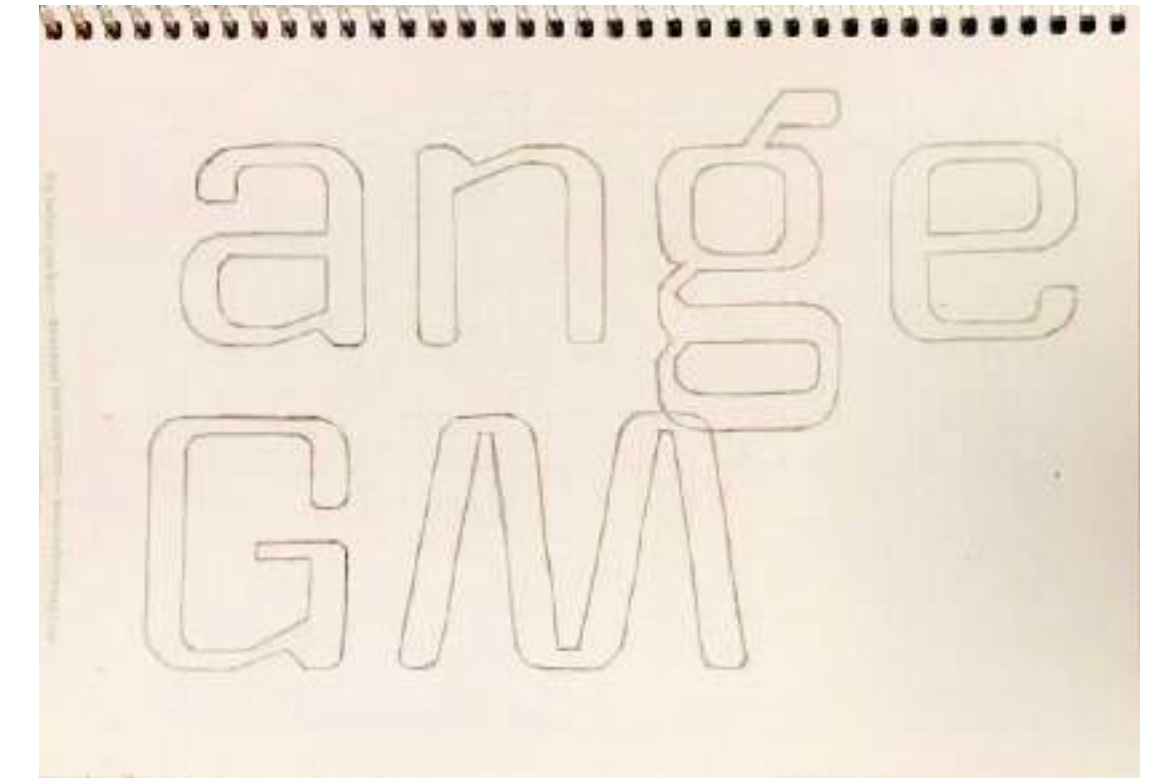
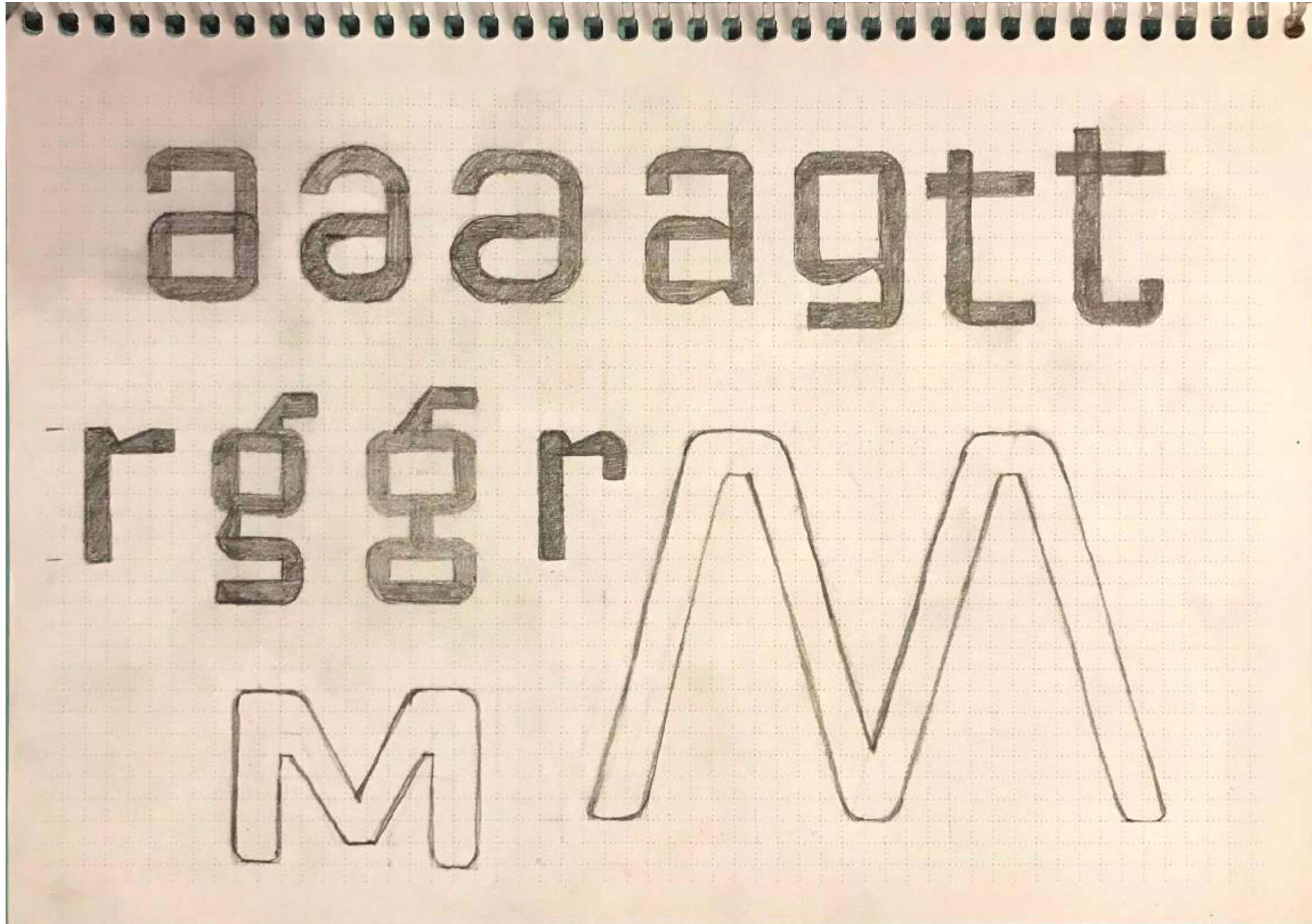
EGOYZaehinoprvtv

EGOYZaehinoprvtv

How a typeface is made: Designers' responses



How a typeface is made: Designers' responses



G M a e g h n o p r t

G M a e g h n o p r t

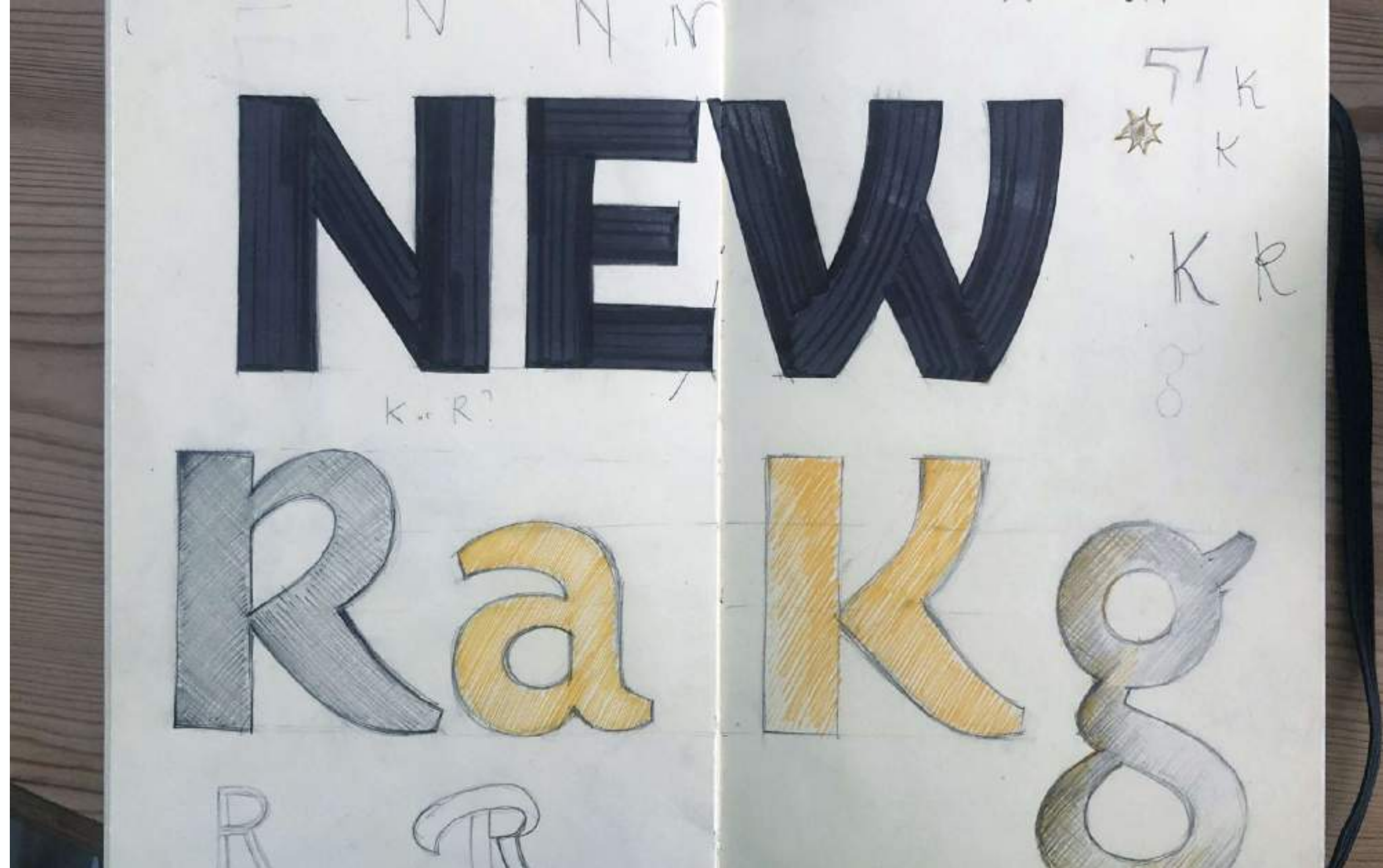
Commissioned Designs

- Bisbee
- Widescreen
- Caraque
- Mendl

How a typeface is made: Bisbee



How a typeface is made: Bisbee



How a typeface is made: Bisbee draft

Hair

H K R R R a e g g g h i l l n o p t y

Regular

H K R R R a e g g g h i l l n o p t y

Black

H K R R R a e g g g h i l l n o p t y

How a typeface is made: Bisbee concept

Hair Display

AHEGOKRabcefghilnoprsty **AGRag**

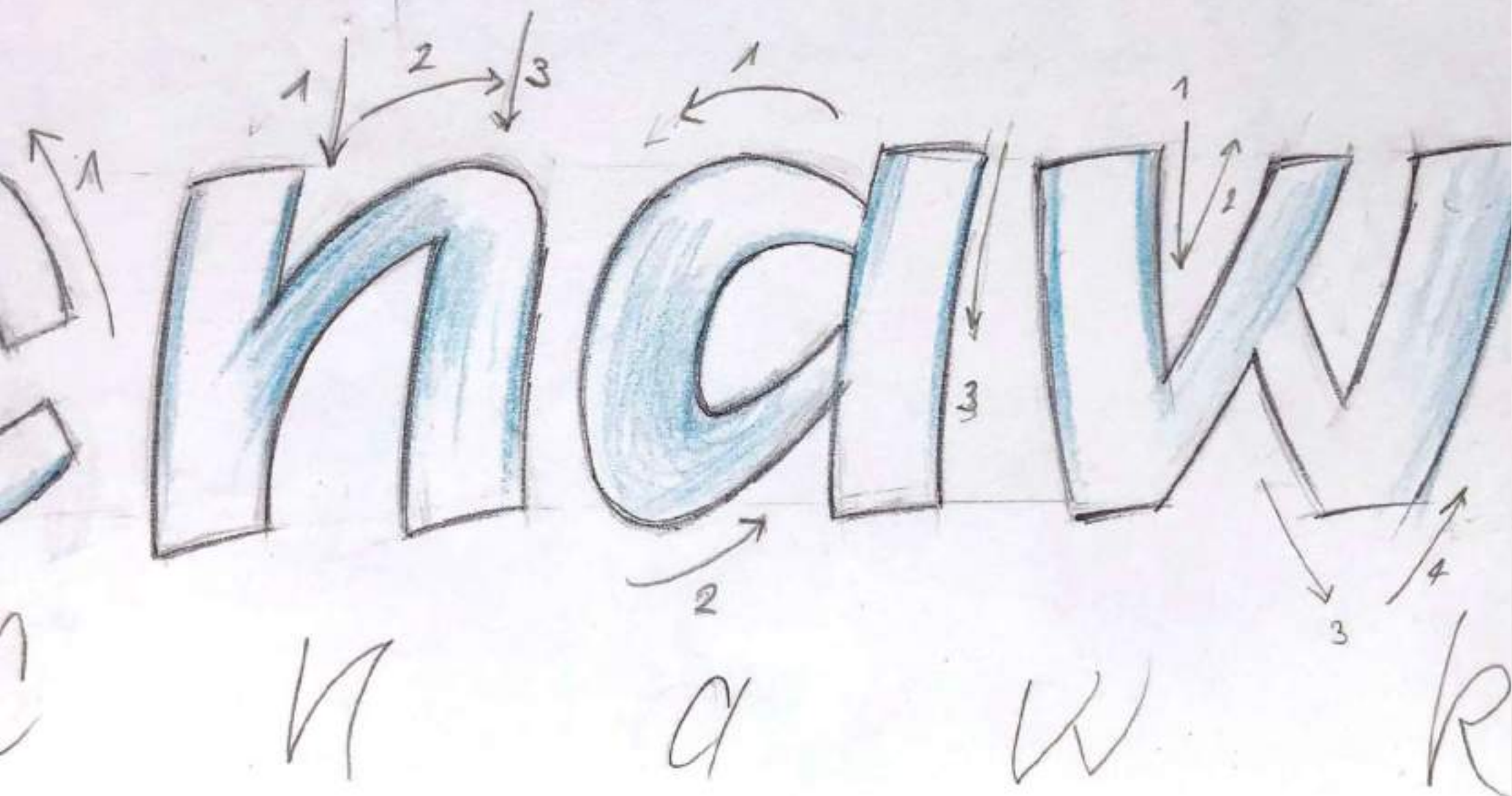
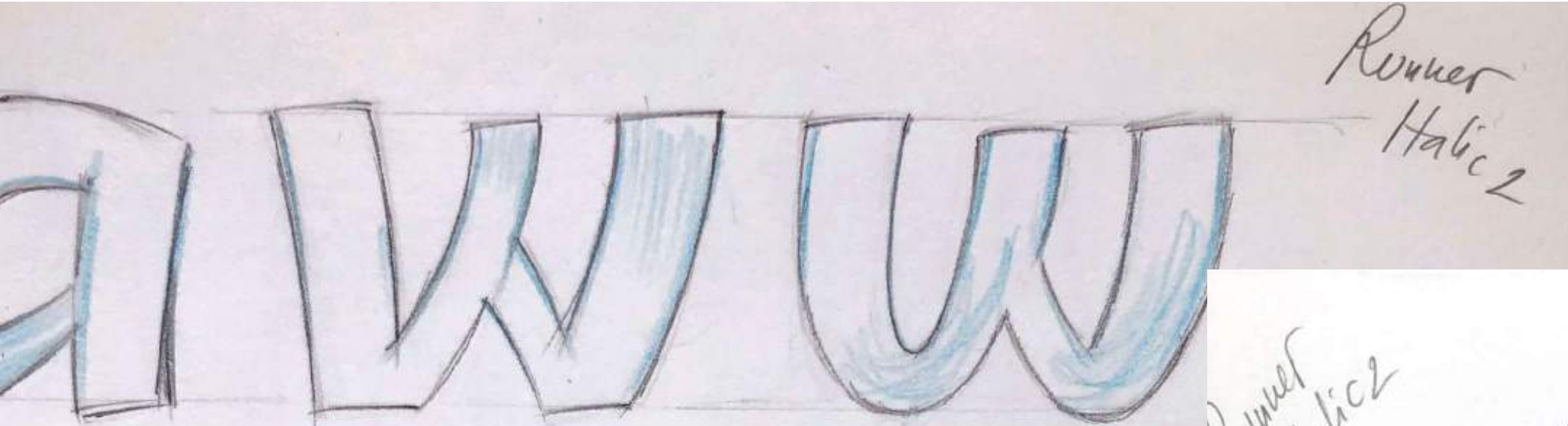
Regular Display

AHEGOKRabcefghilnoprsty **AGRag**

Black Display

AHEGOKRabcefghilnoprsty **AGRag**

How a typeface is made: Bisbee concept



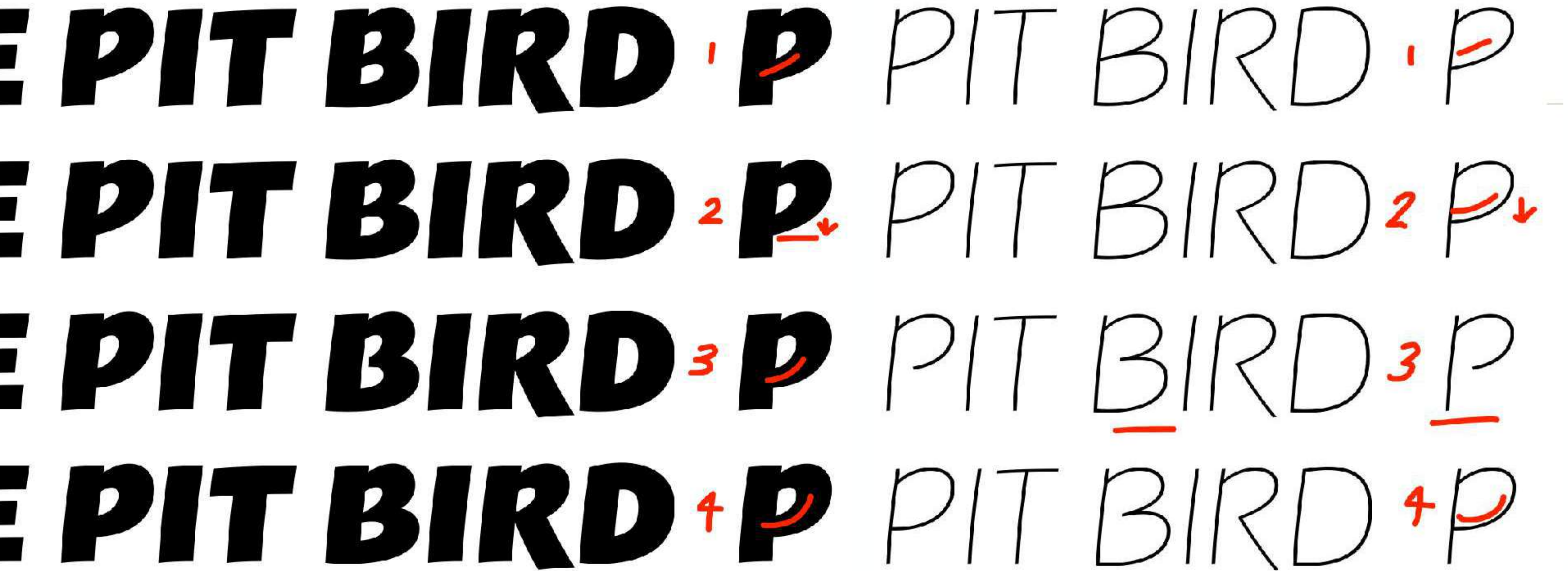
Black Display Outlandish Italic

AHEGOKR

acehilnkoptyw

AHEGOKR

acehilnkoptyw



1 **Huh? Chi!**

2 **Huh? Chi!**

3 **Huh? Chi!**

1 Huh? Chi!

2 Huh? Chi!

3 Huh? Chi!

Runner RUNNER 1
Runner RUNNER 2
Runner RUNNER 3
Runner RUNNER 4
Runner RUNNER 5

Gulp GULPiG 1
Gulp GULPiG
Gulp GULPiG

Alarm! AHIA!

Killer KILLER

Alarm! AHIA!

Killer KILLERIK

Alarm! AHIA!

7Killer 7KILLER

Alarm! AHIA!

7Killer 7KILLEER

Alarm! AHIA!

7Killer 7KILLER

NET WEIGHT: 500lb

FRAGILE

1x
RUBBER
ANVIL

WITH
R BACK

THIS WAY UP!

Hairline

Thin

Light

Regular

Medium

SemiBold

Bold

XBold

Black

Horseshoe Bend

Wrather Arch Meteor Grand Canyon

Coyote Buttes Crater Caverns

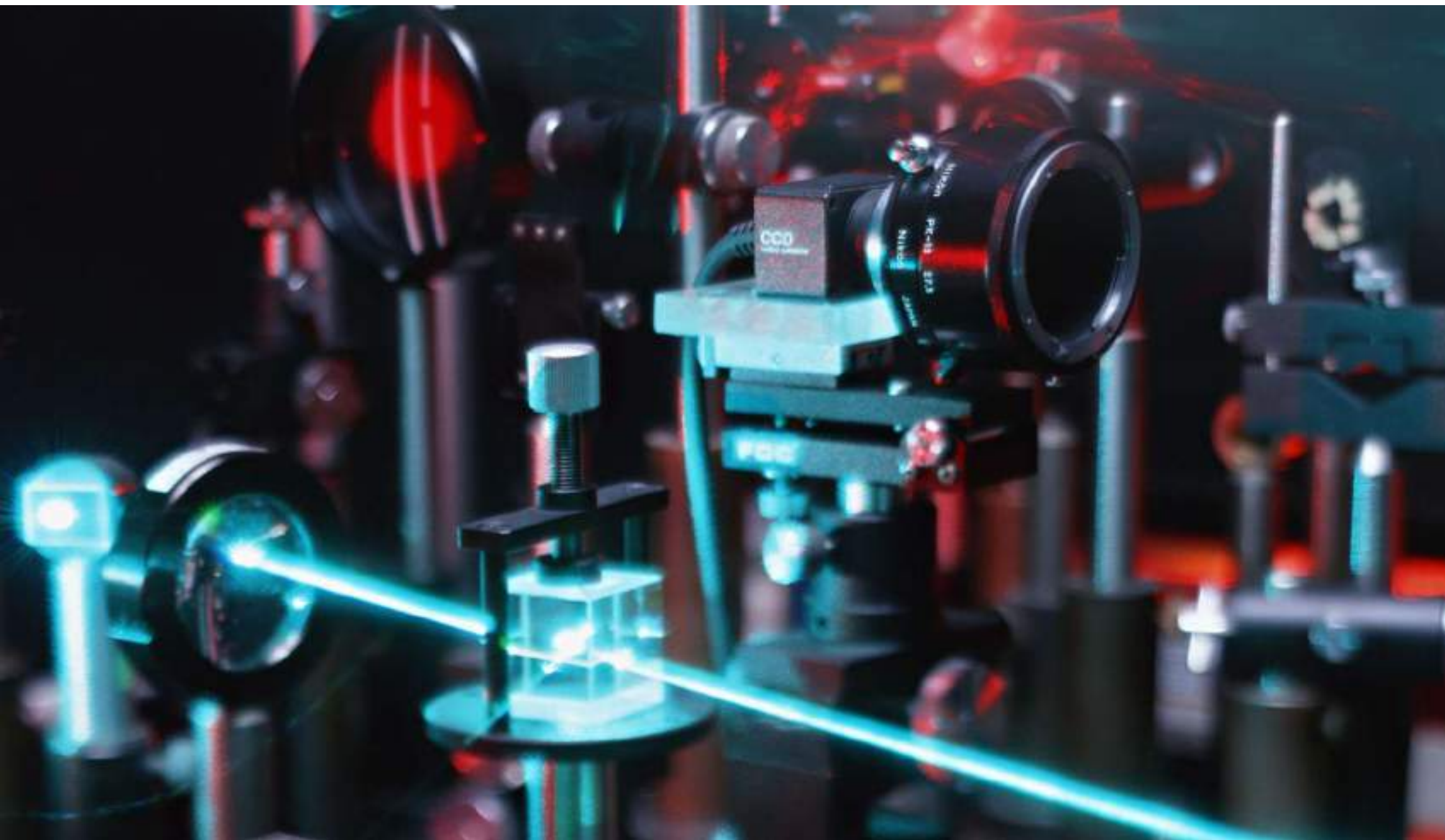
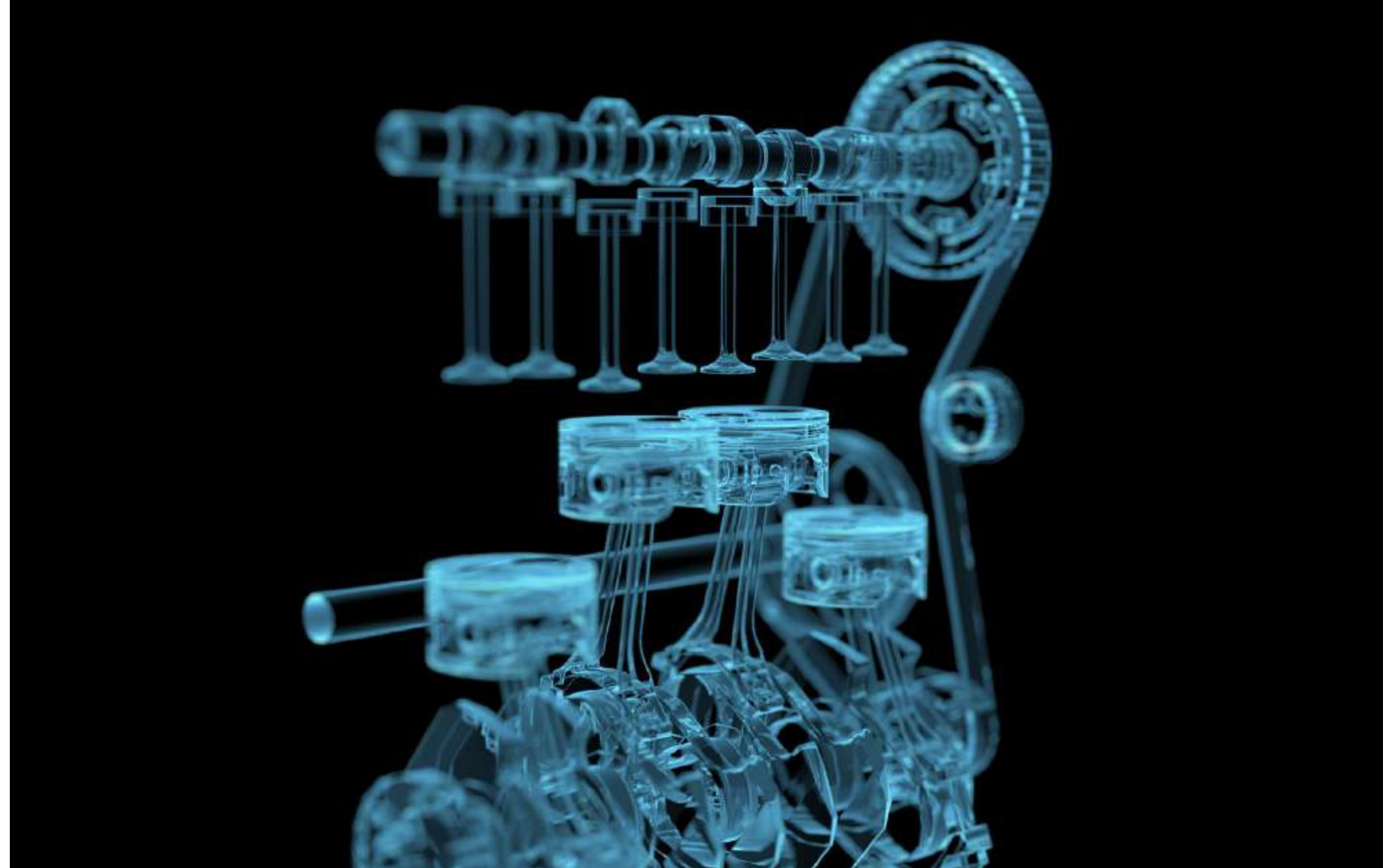
Tonto Vermilion Cliffs National Monument

Natural Bridge Monument Valley

How a typeface is made: Widescreen



How a typeface is made: Widescreen



BCEG

BCEG

aehimn

aehimn

optwy

optwy

How a typeface is made: Widescreen concept

FINED Extreme Master even wider

BCEG

BCEG

balance contrast by increasing vertical stem weight

decrease 'bone' effect

aehimn

consistent crotches

improved curves

aehimn

consistent crotches

improved curves

equalised proportions for characters that are narrow in the other extreme to work better in middle-widths

optwy

longer more appropriate extenders

wider diagonal characters

optwy

wider diagonal characters

longer more appropriate extenders

How a typeface is made: Widescreen development

The image shows a typesetting sample with handwritten annotations in red ink. The text is arranged in three rows: uppercase letters, lowercase letters, and a final row of lowercase letters. A large red oval encircles the first row of letters. Annotations include arrows pointing to specific features and handwritten notes in red ink.

Annotations:

- Top row:** A large red oval encircles the letters **, - . ABC EG**.
 - Between **,** and **-**: "Connection gets a bit dark compensate ~ bit"
 - Between **-** and **.**: "A TOUCH" with a double-headed arrow.
 - Between **E** and **G**: "Relation? + LC. intentional?"
- Second row:** **HOW**.
 - Under the **O**: "Can also be a touch longer" with an arrow pointing to the right.
 - Under the **W**: "a bit contrasted?" with an arrow pointing to the top of the letter.
- Third row:** **abc efg him**.
 - Under **bc**: "a bit contrasted?" with an arrow pointing to the top of the letters.
 - Under **fg**: "Seems tapping towards the apex?" with an arrow pointing to the top of the letters.
- Fourth row:** **noprstwy**.
 - Under **no**: "a bit contrasted?" with an arrow pointing to the top of the letters.
 - Under **st**: "Seems tapping towards the apex?" with an arrow pointing to the top of the letters.

How a typeface is made: Widescreen development

RRR

RKVVWXYkvwxy

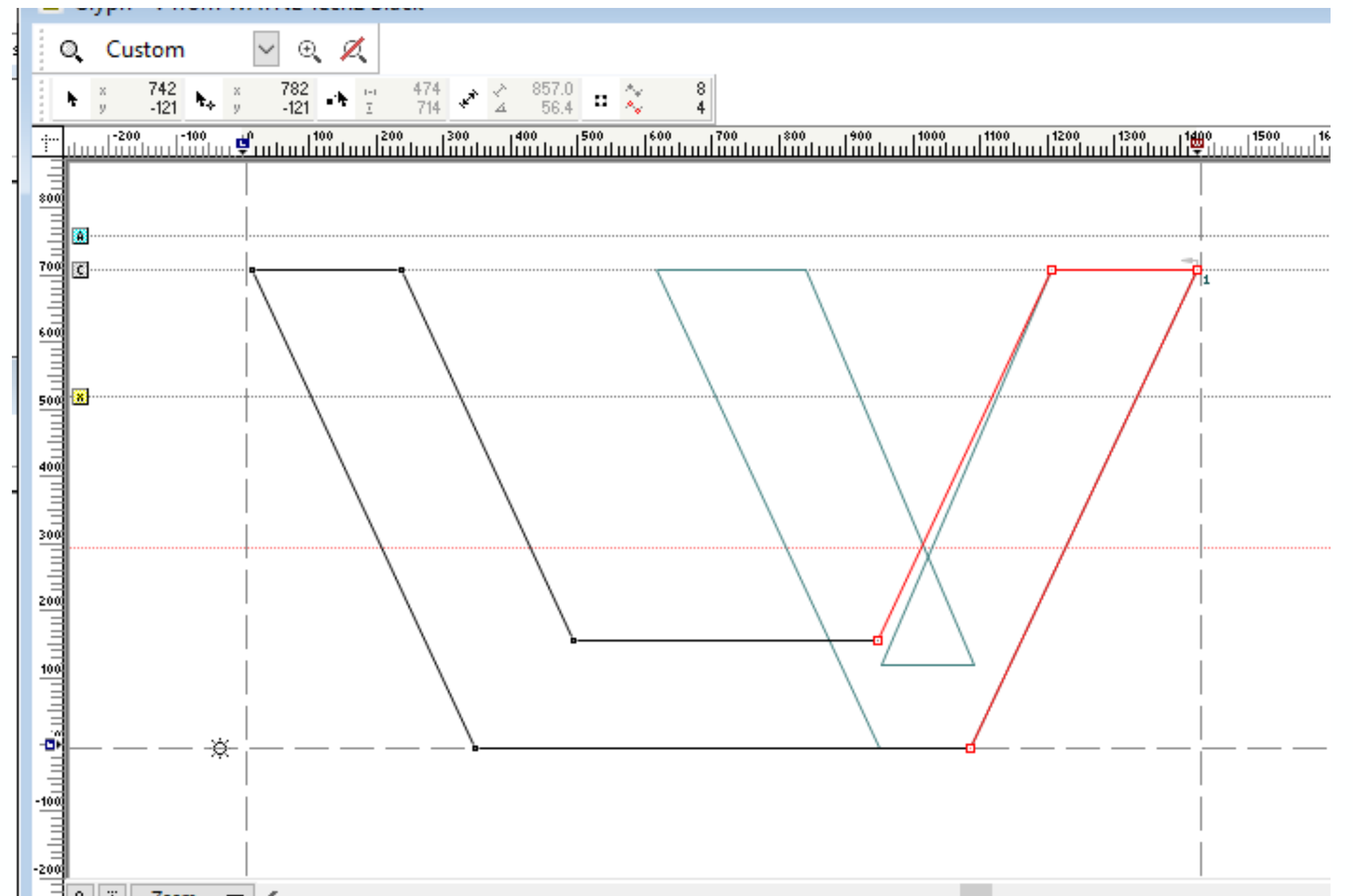
RKVVWXYkvwxy

The screenshot shows a font development software interface. At the top, there are menu options: Preview, Size: 53, Options, and Tools. Below this is a table of metrics for various characters. The main preview area shows the characters 'RKVVWXYkvwxy' in a bold, sans-serif font. Below the preview, there is a 'Preview/Metrics' section with various icons and a table of metrics. At the bottom, there is a vertical toolbar with icons for different tools and a table of metrics.

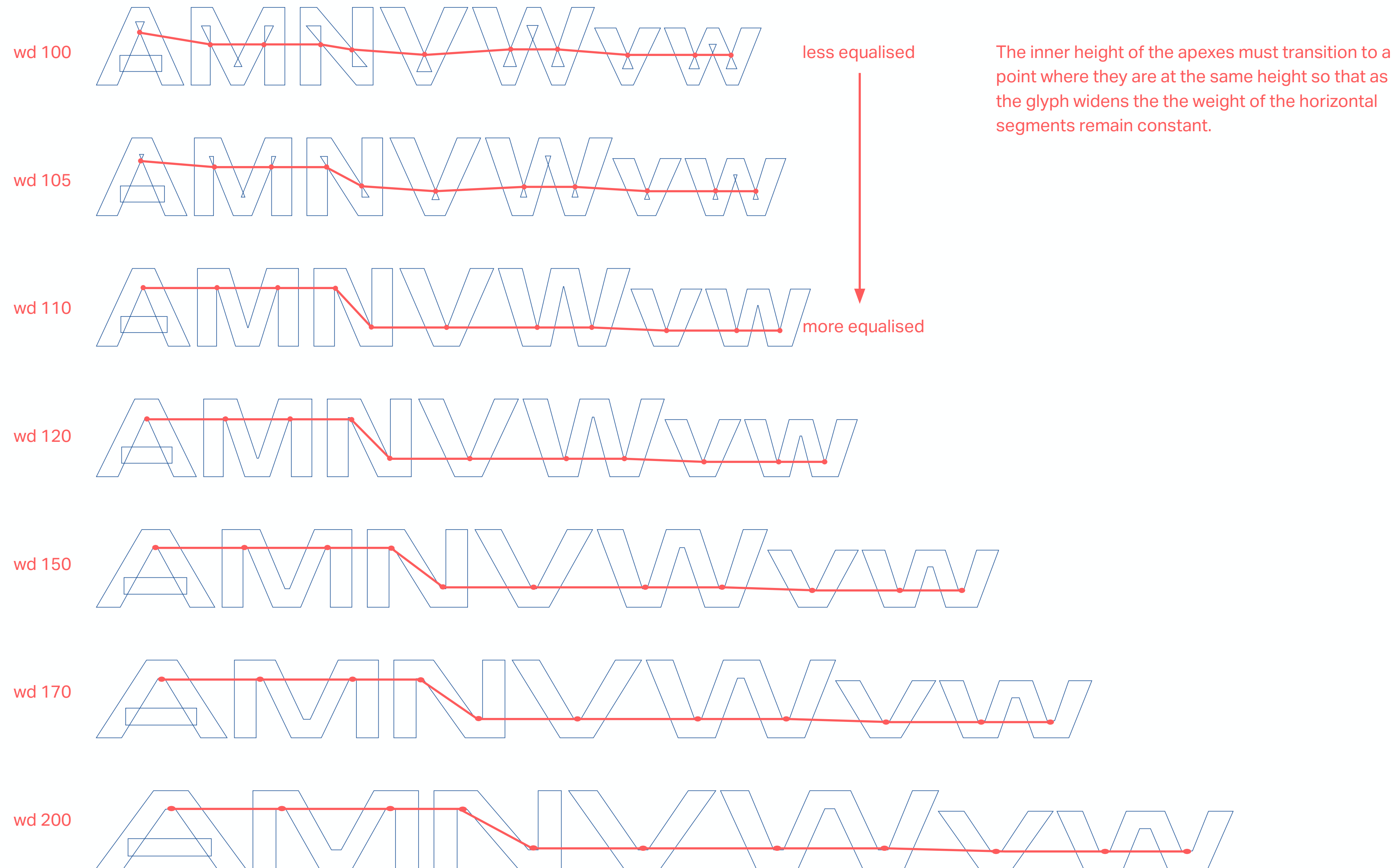
65	65	8	14	10	1	52	10	13	12	10
17	7	8	14	10	1	10	10	23	12	10

Preview/Metrics

1243	1510	1510	1379	328	1048	276	1465	1048	1228	328	1347	1027	1048
------	------	------	------	-----	------	-----	------	------	------	-----	------	------	------



How a typeface is made: Widescreen development



WEIGHT

MIXED WIDTH

INVERTED MIX

ALTERNATIVE MIX

WIDESCREEN

WIDTH



LOW LEVEL DRAVIA TIC DRA
FORM MUTATE MODIFY D
PORARY EXPRESSIVE KINETIC
RIAL MORPHING TYPOO
ONTEMPORARY WIDESCREEN
LEDYNAMIC DIGITAL GR
ARY **WIDESCREEN** ULTRA
SURPRISING INDUSTRIAL
FORM MUTATE MODIFY D
D VARIABLE POWERFUL ENMIC
RARY EXPRESSIVE KINI
OAD VOLID FREE TRIAL TOP

How a typeface is made: Caraque



How a typeface is made: Caraque

A B C D E J K M R V
a b e f i n r t u v
μ ω π ϕ λ ε ρ
λ κ φ Δ 6 4 3
y x 7 1 N 9 2

لعربيية للافتات
हे जानिए में कहाना
12345 !?# 9199
英秀 ھا ۛ
and e ۛ ۛ

CEaehinopty

CEaehinopty

CEaehinopty

CEaehinopty

Hairy octaning
Aerobic reaction
Creation father
Hypnotic craft

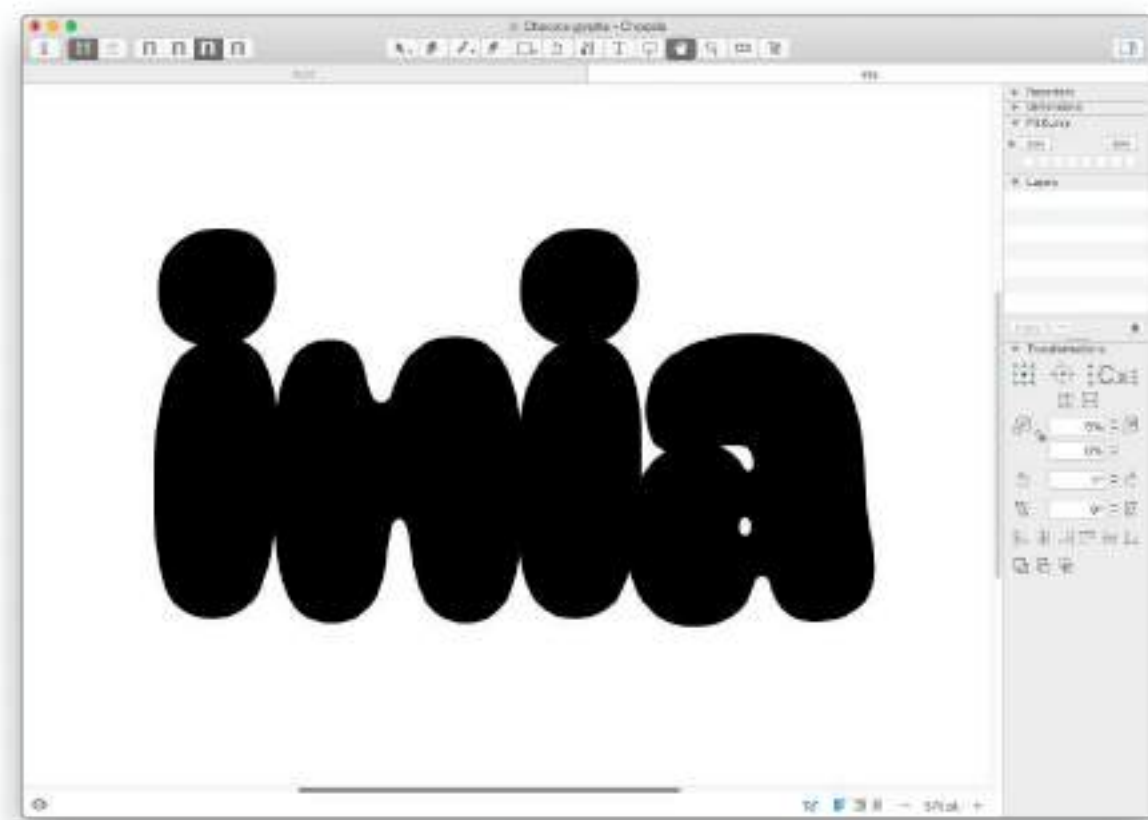
Q Q Q Q Q Q Q

marketing@dalton

softwaredev@dalton

poolparties@dalton

How a typeface is made: Caraque concept

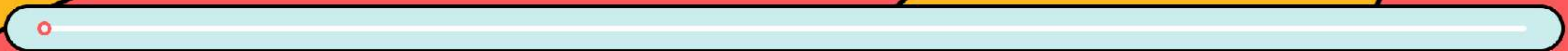
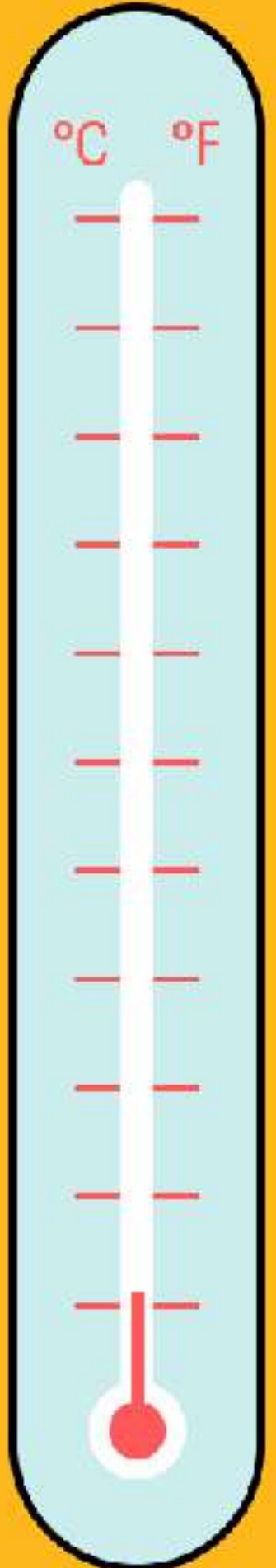


How a typeface is made: Caraque concept



Caraque

Melt



Weight

Day
Dripper

Coral

Day
Dripper

Teal

Day
Dripper

Navy

A shade

for every



Electric Blue

Day
Dripper

Teal

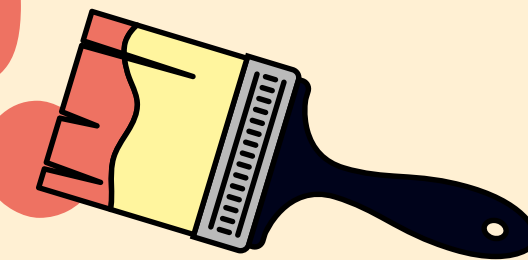
situation

Day
Dripper

Navy

Day
Dripper

It's like watching paint
dry. Day Dripper, made
for every painter.



How a typeface is made: Mendl



----- Alternate e with horizontal terminal cut

ADEGHN Raehinoptye

Thin

ADEGHN Raehinoptye

Regular

ADEGHN Raehinoptye

UltraBold

How a typeface is made: Mendl concept

Thin

ADEGHNORabcefghinoprstvy.,-

Regular

ADEGHNORabcefghinoprstvy.,-

ExtraBold

ADEGHNORabcefghinoprsty.,-

Black

ADEGHNORabcehinoptv

RBP S EF

Hj l 4Q & & &

A B B C D E F G G H I J K L M N O P P

Q Q R R S S T U V W W X Y Z

A B B C D E F G G H I J K L M N O P P

Q Q R R S S T U V W W X Y Z

A B B C D E F G G H I J K L M N O P P

Q Q R R S S T U V W W X Y Z

A B B C D E F G G H I J K L M N O P P

Q Q R R S S T U V W W X Y Z

How a typeface is made: Mendl development

ABCDEFGHIJKLMNOPQRSTUVWXYZ
abcdefghijklmnopqrstuvwxyz 0123456789&

ABCDEFGHIJKLMNOPQRSTUVWXYZ
abcdefghijklmnopqrstuvwxyz 0123456789&

ABCDEFGHIJKLMNOPQRSTUVWXYZ
abcdefghijklmnopqrstuvwxyz 0123456789&

ABCDEFGHIJKLMNOPQRSTUVWXYZ
abcdefghijklmnopqrstuvwxyz 0123456789&

How a typeface is made: Mendl development

A B C D E F G H I J K L M N O P Q R S T U V W X Y Z

a b c d e f g h i h j k l m n o p q r s t u v w x y z 0 1 2 3 4 5 6 7 8 9 &

A B C D E F G H I J K L M N O P Q R S T U V W X Y Z

a b c d e f g h i h j k l m n o p q r s t u v w x y z 0 1 2 3 4 5 6 7 8 9 &

A B C D E F G H I J K L M N O P Q R S T U V W X Y Z

a b c d e f g h i h j k l m n o p q r s t u v w x y z 0 1 2 3 4 5 6 7 8 9 &

A B C D E F G H I J K L M N O P Q R S T U V W X Y Z

a b c d e f g h i h j k l m n o p q r s t u v w x y z 0 1 2 3 4 5 6 7 8 9 &

Queen Gin & Soda

Dusk

Queen Gin & Soda

Dawn

Mendl Sans Dusk Hair
Mendl Sans Dusk Thin
Mendl Sans Dusk Light
Mendl Sans Dusk Regular
Mendl Sans Dusk Medium
Mendl Sans Dusk SemiBold
Mendl Sans Dusk Bold
Mendl Sans Dusk XBold
Mendl Sans Dusk Black

Mendl *Sans* Dawn Hair
Mendl *Sans* Dawn Thin
Mendl *Sans* Dawn Light
Mendl *Sans* Dawn Regular
Mendl *Sans* Dawn Medium
Mendl *Sans* Dawn *SemiBold*
Mendl *Sans* Dawn **Bold**
Mendl *Sans* Dawn **XBold**
Mendl *Sans* Dawn **Black**

OPEN
TO VIOLATE THE
NATIONAL
PROHIBITION ACT

EVERY HOUR
IS HAPPY HOUR

JAZZ
IS IN THE
BASEMENT

RESTAURANT
THIS WAY 

OPEN



 GENTS 

VARIABLE WIDTH AND STYLE AXES
MENDL


CLOAKROOM

CLOSED

45+% PROOF
BATHTUB GIN


 LADIES 

THE
SPEAK EASY

 **Reserved** 
Table for 2 21:00 – 02:00

**50%
OFF**
All Drink
All Night

DRINK UP!



THE FUTURIST MENU

Italian Breasts in the Sunshine

A Futurist dessert that features almond paste topped with a strawberry, then sprinkled with fresh black pepper

Milk in a Green Light

A large bowl of cold milk, a few teaspoons of honey, many black grapes, and several red radishes illuminated by a green light

Diabolical Roses

Deep-fried red rose heads in full bloom

Divorced Eggs

Hard boiled eggs are cut in half, their yolks are removed and put on a "poltiglia" of potatoes, and their whites on one of carrots

Zoological Soup

in animal shapes, made of rice flour, filled with jam and served in a eau de Cologne

Paradox

1 walls of the abbesques tree Pro

THE STANDARD MENU

The Original Cobb Salad

Iceberg lettuce, frisée, romaine, watercress, tomato, chicken, avocado, bacon, hard-boiled egg, and blue cheese, tossed with our secret French dressing

Lobster Roll

A New England style warm, toasted, buttered roll, packed to the gills with lobster, celery, lemon juice, chives, and mayonnaise

Caesar Salad

A hearty green salad of romaine lettuce and croutons, dressed with lemon juice, olive oil, shredded soft boiled eggs, Worcestershire sauce, anchovies, garlic, Dijon mustard, Parmesan, and black pepper

The Reuben

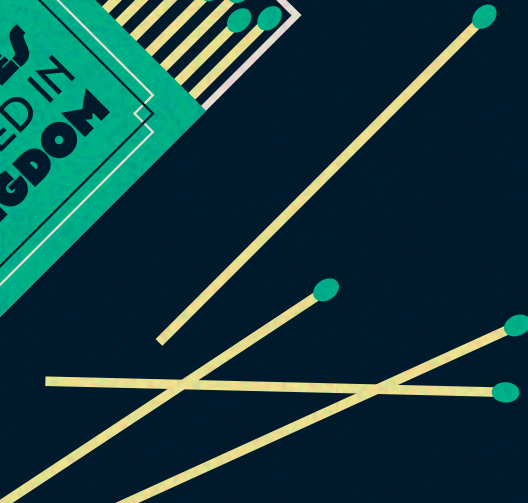
A grilled sandwich willed with the finest corned beef, Swiss cheese, Sauerkraut, and Russian dressing, in two slices of rye bread

Macarons

Two sweet meringues, filled with various fillings. 12 macarons: raspberry jam, dark chocolate, strawberry cheesecake, lemon, lavender coconut, salted caramel praline, pistachio, red velvet, vanilla bean ice cream, and key lime

NEW

TEAL LABEL
GREEN TIPPED
SAFETY MATCHES
MANUFACTURED IN
UNITED KINGDOM



Co
one c
sandpape
the pajam
pajamas, they
being able to
according to
the dr

Dalton Maag Font Library (Since 2020)

- 12 Briefs
- Countless Proposals
- 10 Comissioned Designs

April 2020: Three briefs

- Typeface Family to Express Luxury
- Typeface Family for a Fictional Company or Organization
- Typeface Family for an Esports Team

ance *Amulience*

nt *Extravagant*

Marble Arch

curious **Prospero**

Supernatural **Mo**

Marble Arch: Optical Sizes

a

Caption

a

Text

a

SubHead

a

Headline

a

Poster

multiplayer online battle arena

COMPETITIVE STREAM

critical strike

BETA TESTING PLAYGROUND

virtual reality interactive experience

character class

£219,534 €180,521 \$237,631 ₹520,412

first person shooter

Shader

Shader

Shader

Shader 16

Shader

Shader 64

Shader

Shader Glitch

Dalton Maag Font Library (2023)



52 Families
48% Sans Serif
25% Serif
27% Display

150px AA



Styles ▾

OpenType ▾



Mendi Sans



Get free trial

Buy licences

Thank You

Zeynep Akay, Creative Director
zeynep.akay@daltonmaag.com

daltonmaag.com

