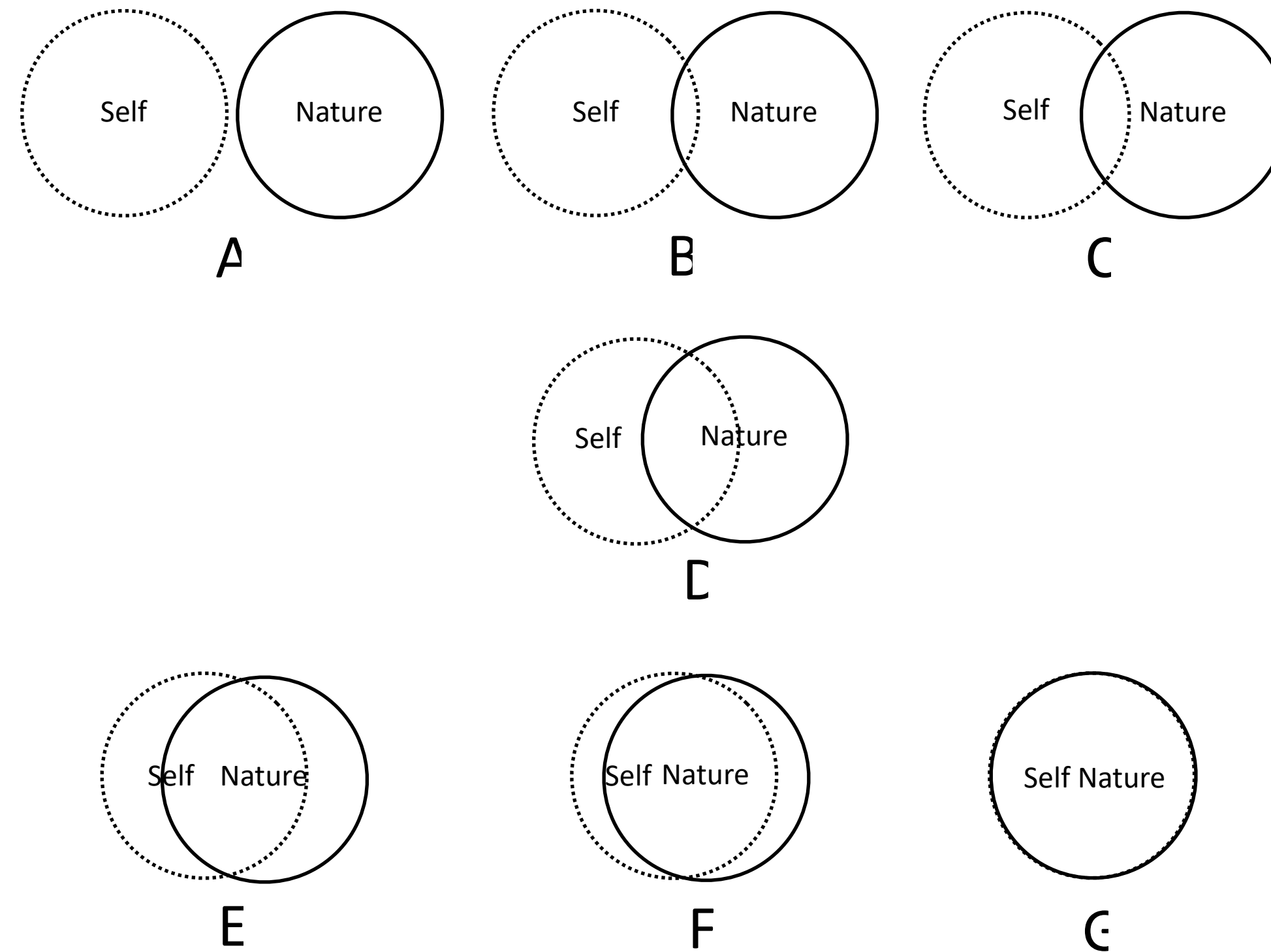


# **WE ARE HUMANS**

Carla Paoliello

DesignMatters'25Tokyo



“Inclusion of Nature in Self” by Schultz (2002)







other elements

nitrogen

hydrogen

carbon

oxygen

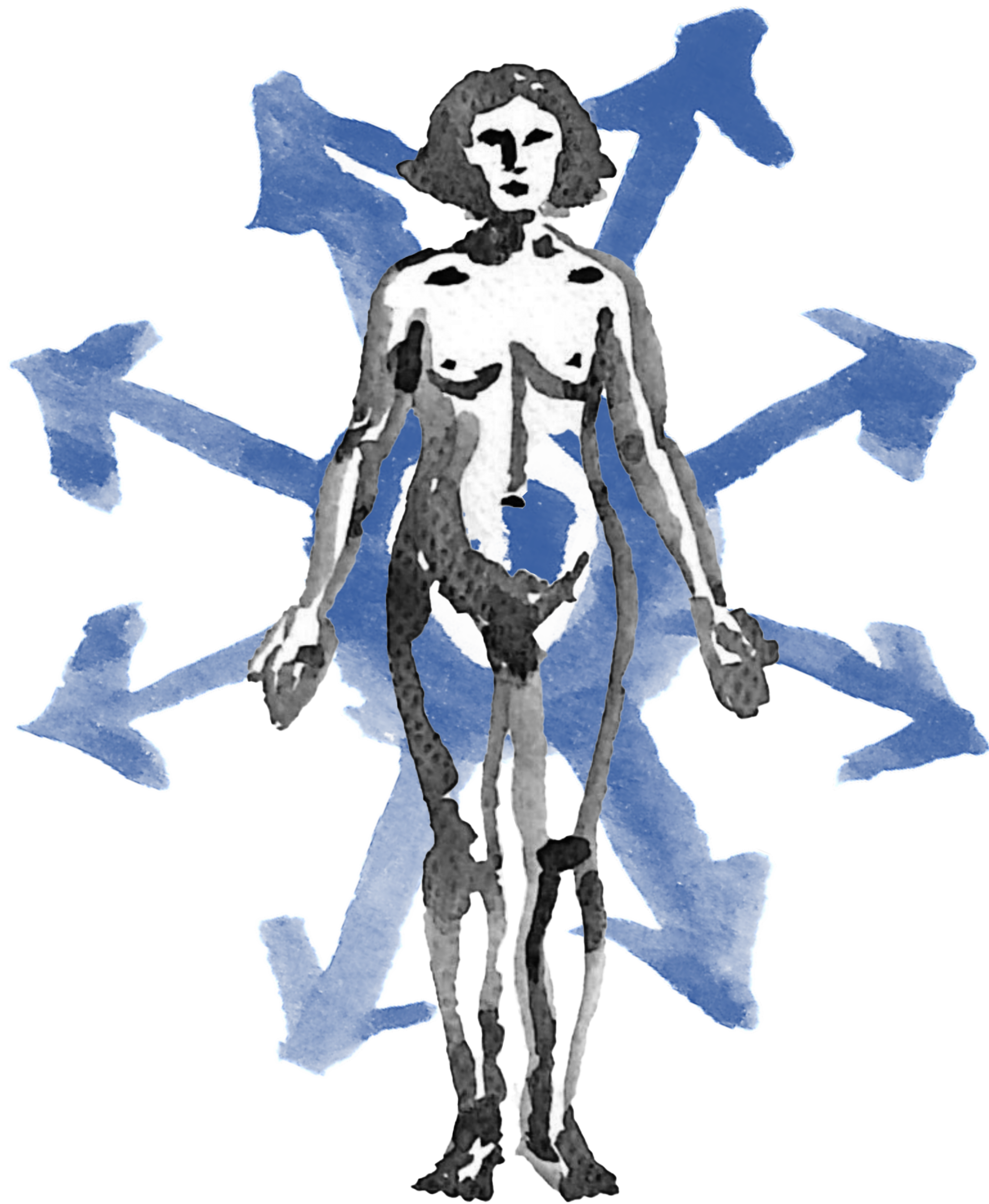


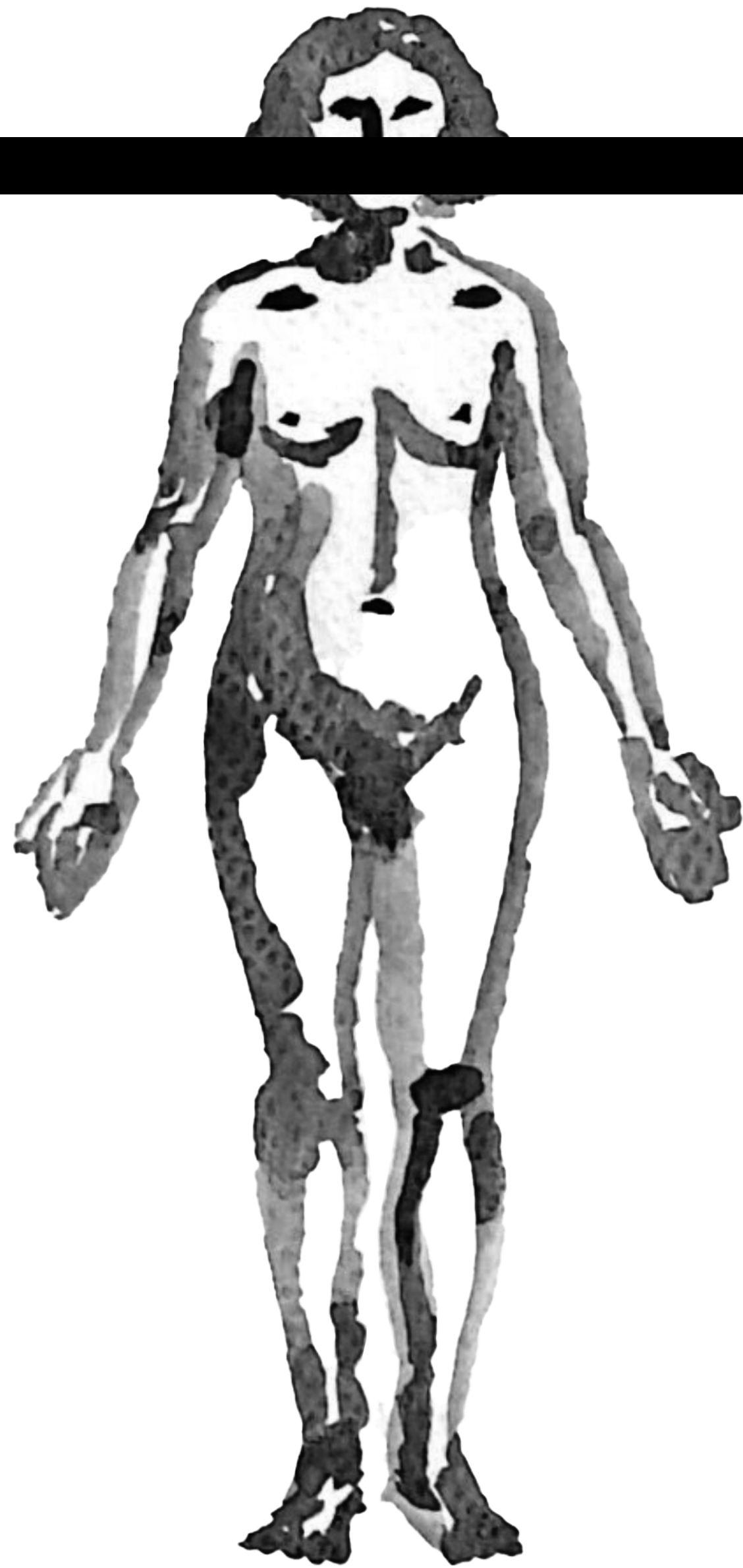
microorganisms



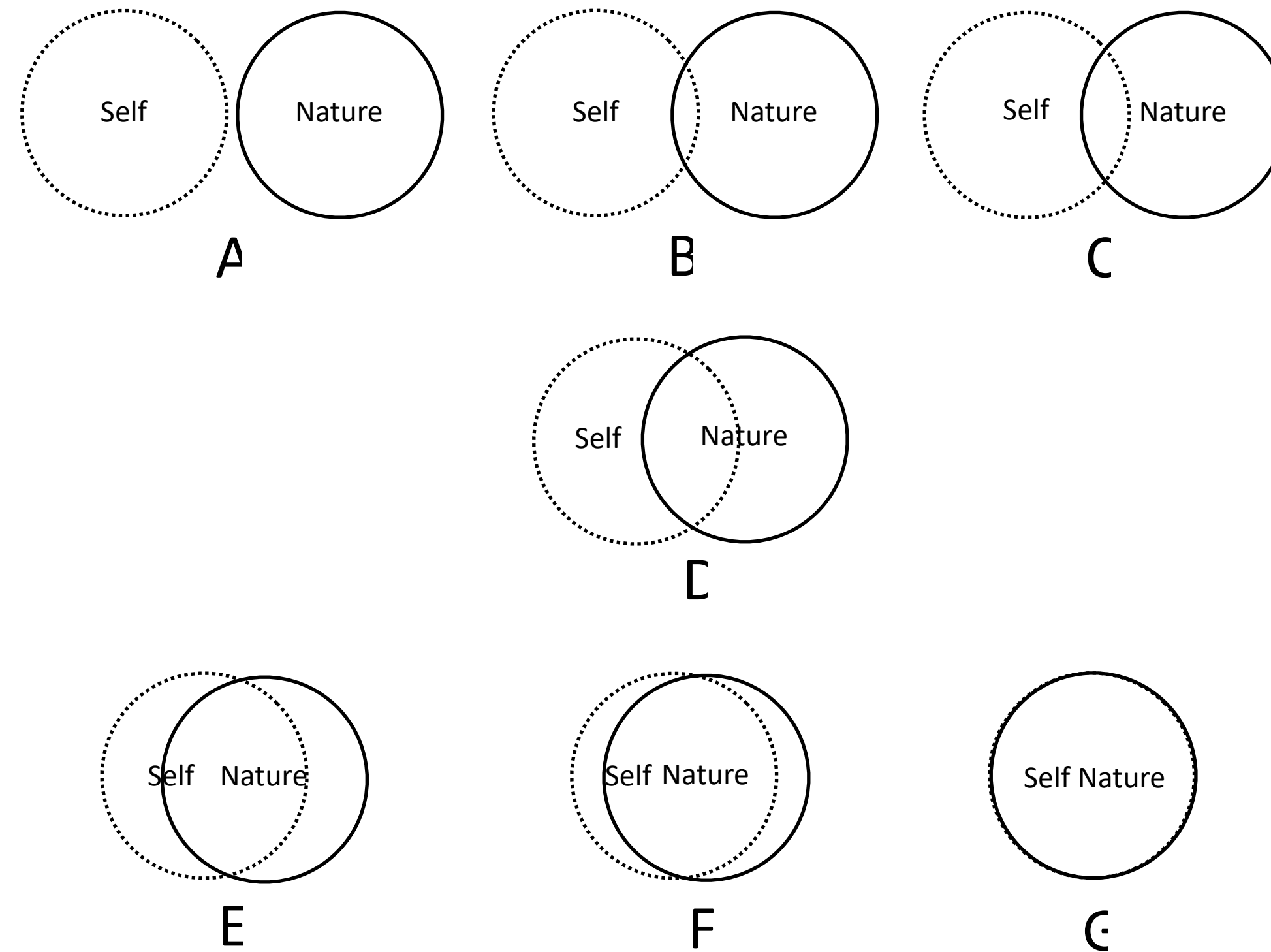
human cells

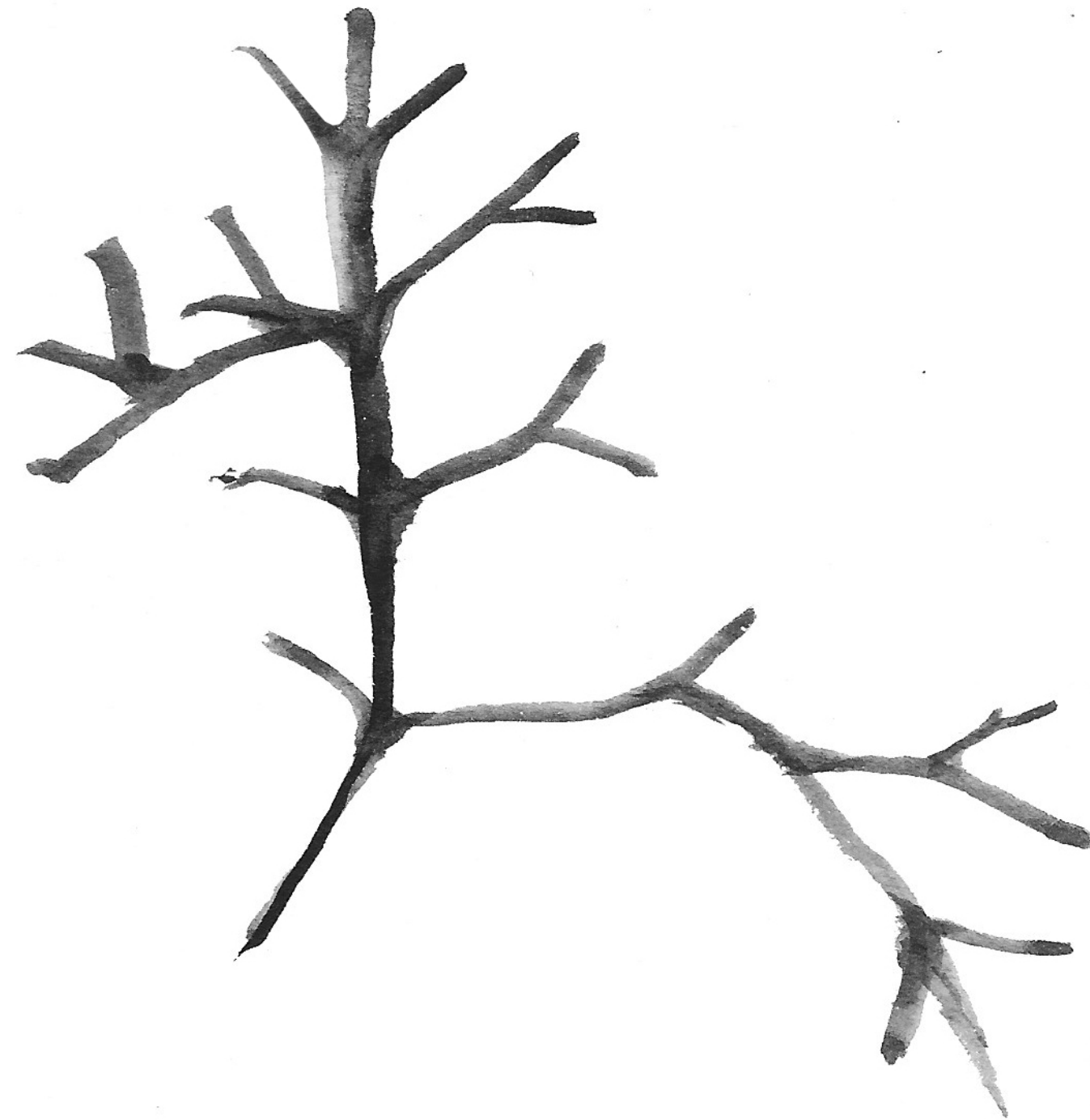






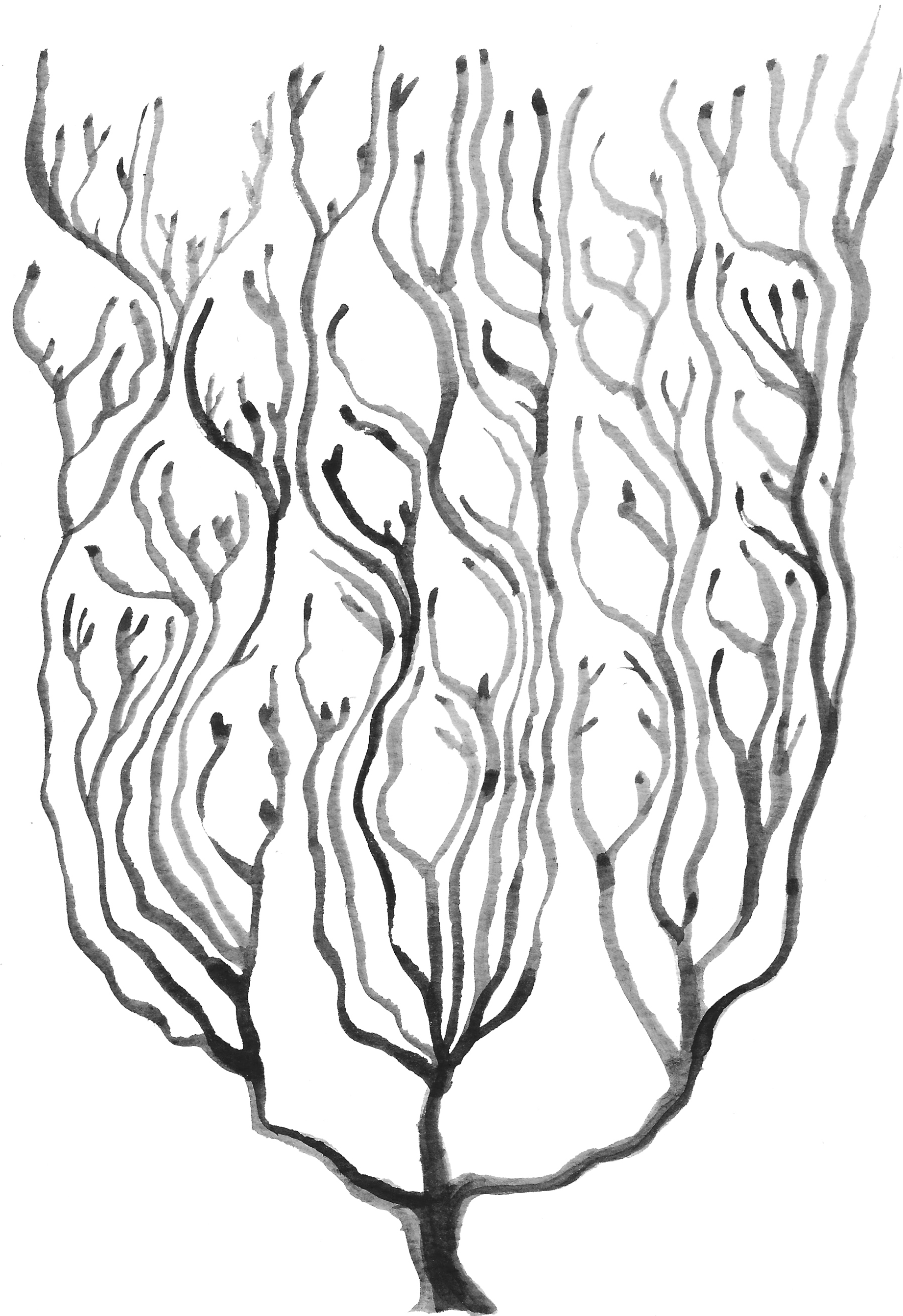






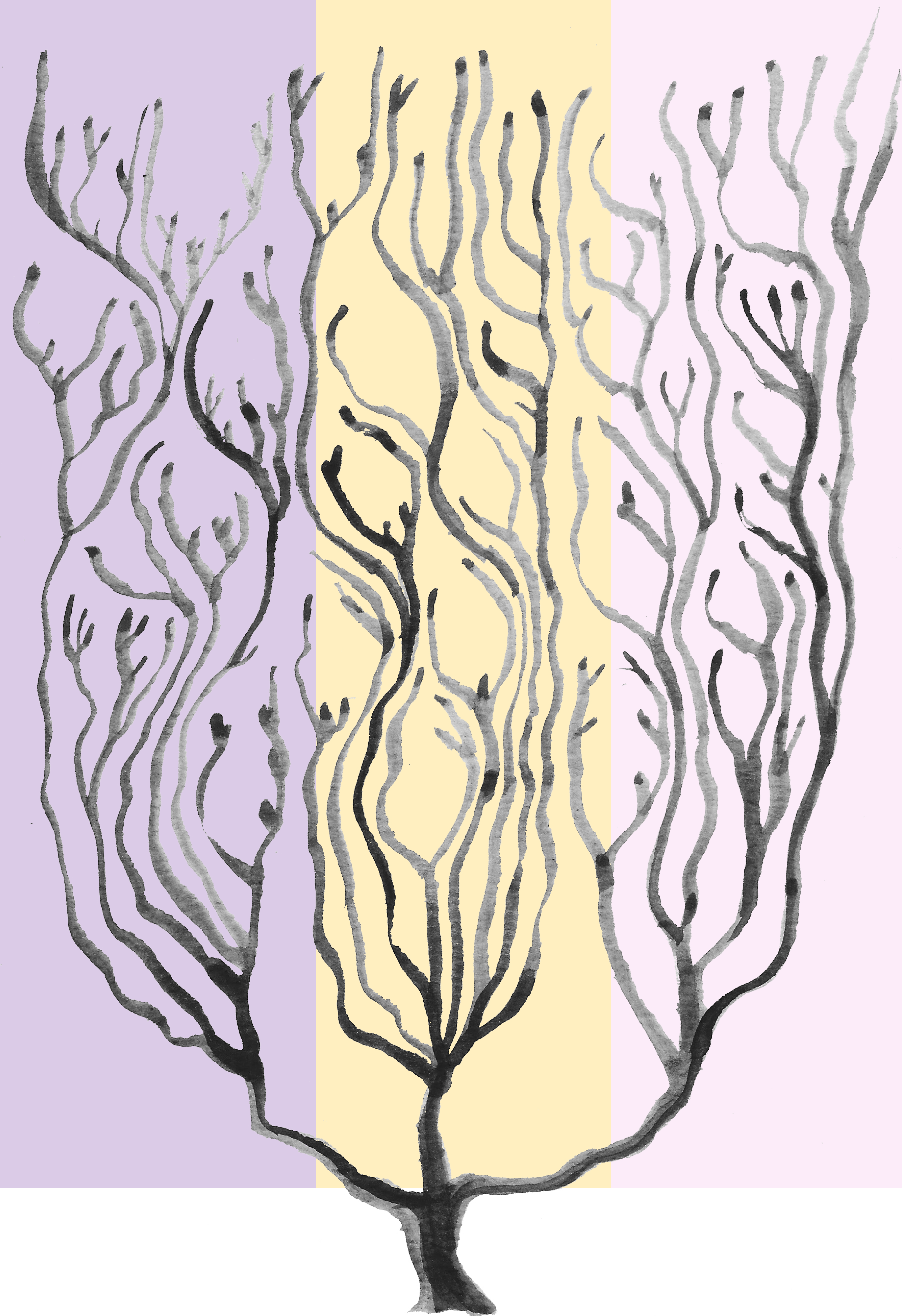
Inspired by Charles Darwin's first diagram of an evolutionary tree from his First Notebook on Transmutation of Species (1827)



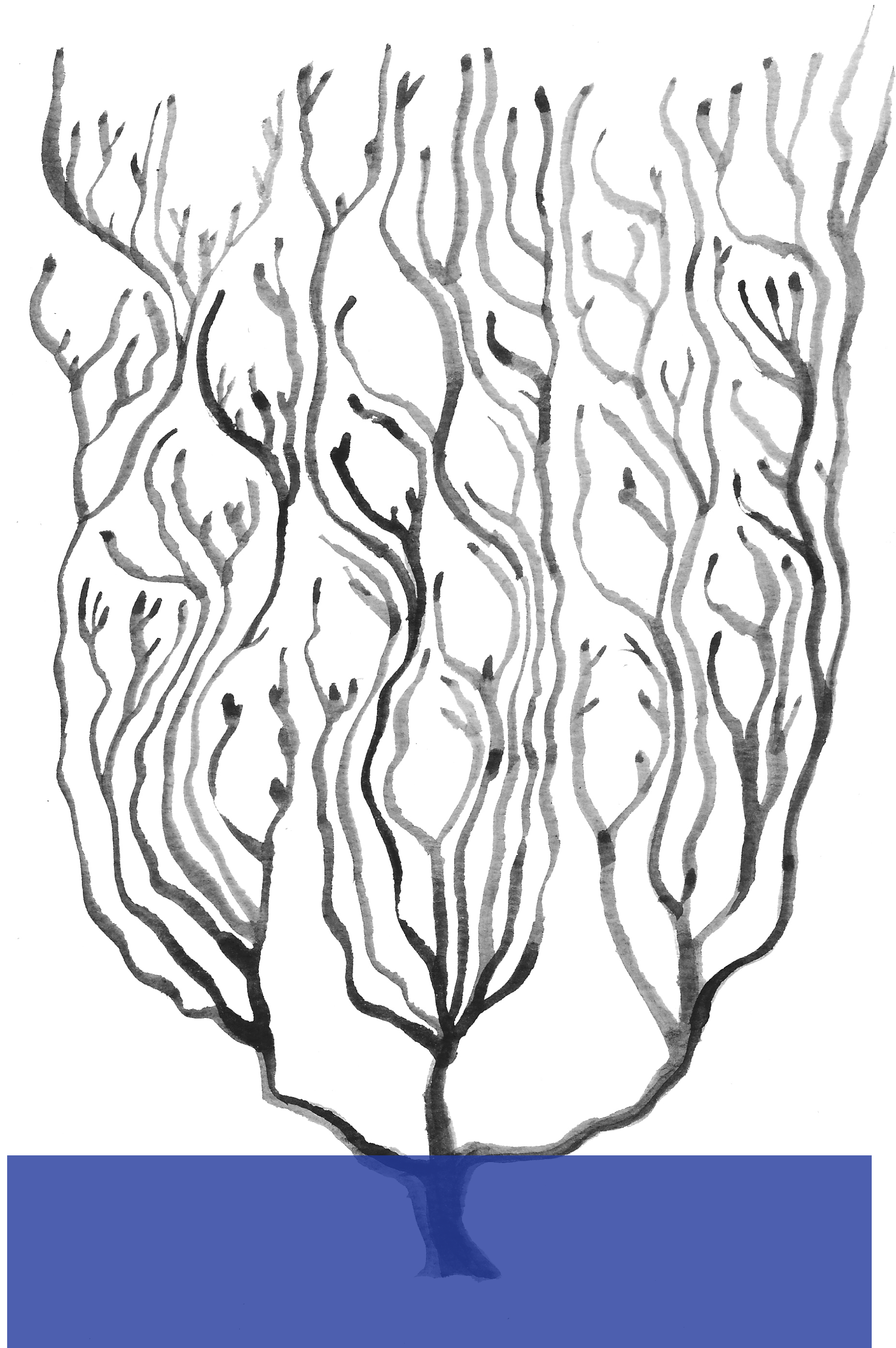


Inspired by Ernst Haeckel's The Evolution of Man (1879)









WE ARE NATURE

# NATURE-CENTRED DESIGN

Ecodesign

Sustainable Design

Slow Design

Circular Design

Biomimicry

Degrowth Design

Biodesign

Lo-Tech

Life-Centred Design

Regenerative Design

Bioregional Innovation

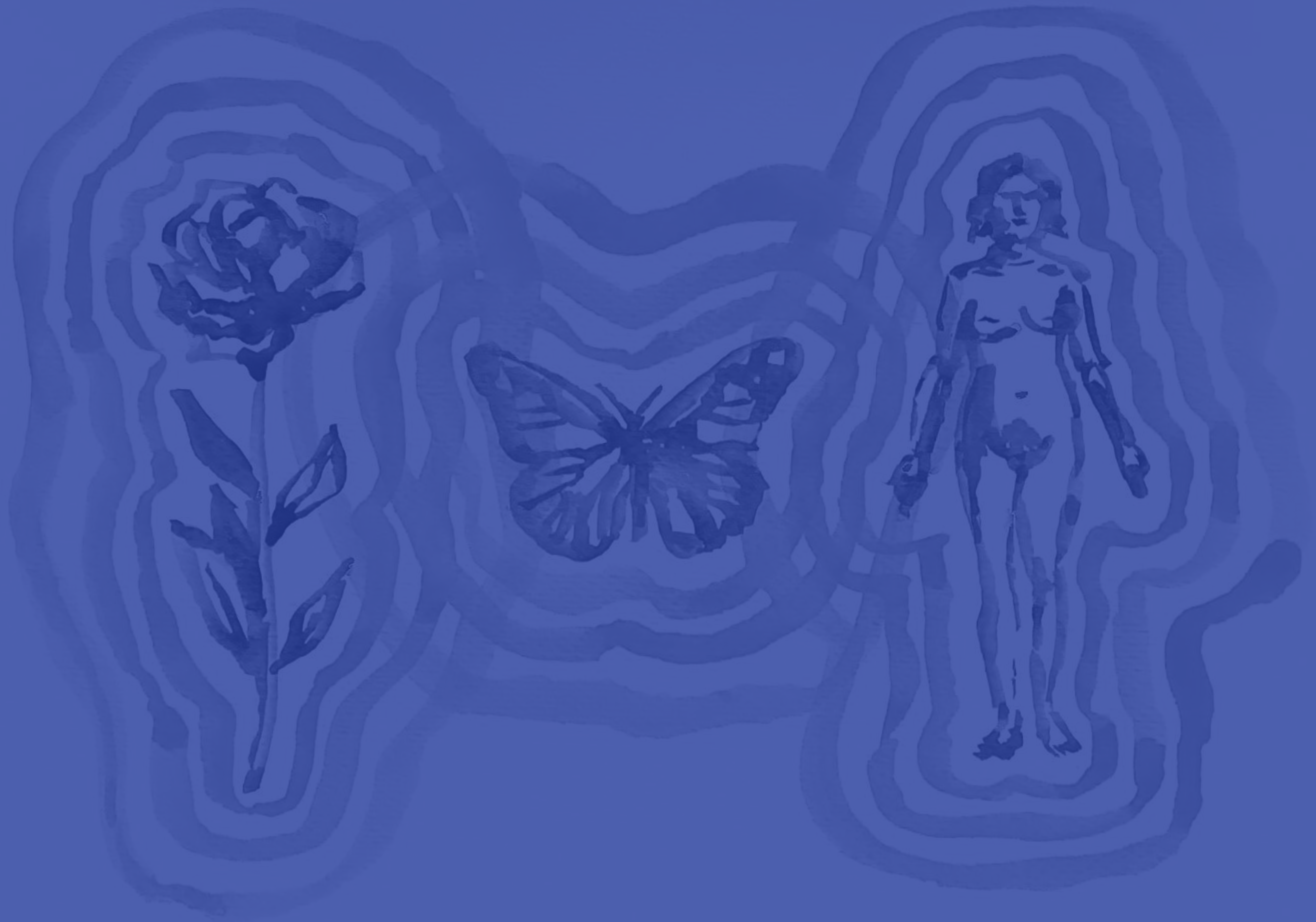
Transition Design

More-Than-Human Design

Multispecies Design

Nature-Centred Design





How can we incorporate the visions of interconnectedness

responsibility

reciprocity

care

regeneration

into our design practices?

Decentralizes the human entity

Reinvents the relationship between human and more-than-human beings

Discusses colonialism and nature

Reviews Political Ecologies

Criticizes the modern Western conception of the “natural”

Imagines Hybrid life

Bases itself on Empathy, Respect, Co-existence





Let us imagine a bowl.

Let us imagine a ceramic bowl.

Let us imagine a wooden bowl.

Let us imagine a mycelium bowl.

Let us imagine...

Let us practice a Nature-Centred Design.

THANK YOU

carlapaoliello@gmail.com

$\frac{b}{a}$

cieba

**belas-artes**  
**ulisboa**